

BOOM-101

PAR-38



Benefits

1. No glitter: DC output, no question of the frequency of blinking
2. No glare: Special optic design, do not see the light source directly
3. No ghosting: 10Wx1pcs LED light source
4. High Brightness: 42cm high from the desktop, lamp illumination up to 1400lux, exposure range ϕ 70cm
5. High CRI: more than 75, non-visual fatigue, mellow realistic lighting
6. Long lifetime: normal circumstance there is no need to replace light bulbs often
7. No UV, non-thermal radiation, do not harm the skin
8. Ultra Low Power: 10Wx1 LED light output could replace 23W CFL or 60W incandescent lamps
9. Safety: DC output, not afraid of being electrocuted, non-glass or fragile materials
10. Environmental protection: The lamps and LED light source are free from toxic. Substances will not affect the environment pollution

Specification

Lamp: 10W LED x1

Also Available on

7W→5W→2W

Beam Angle: 80°

AC Input: 110VAC OR 230VAC

Dimension (mm): ϕ 120 x H 170

COLOR: Clear Anodized (STD)

OPTIONAL: Red Wine, Blue, Gold, Bronze



Patent protected Copy will result in legal action



HR-101 / HR-102



HRN-101



HR-051

Type	LED	Lumen	Beam Angle	CRI	Dimension (mm)
HR-101	10W	550~650lm	90°	80	φ 103x φ 80 x H80 cut out φ 95
HR-102	10W	550~650lm	120°	80	φ 103x φ 80 x H80 cut out φ 95
HRN-101	10W	550~650lm	60°	80	φ 103x φ 80 x H80 cut out φ 95
HR-051	5W	550~650lm	140°	80	φ 88x φ 68 x H40 cut out φ 75

**Aluminum Trim (Additional Glasses Available)
for HR-101, HR-102, HRN-101**

Round

Silver Bright(B1)

Silver Matt(B2)

Baking White(B3)

Square, Diamond

Silver Matt(C2)

Baking White(C3)

Square, Arc

Silver Matt(D2)

Baking White(D3)



**AD-1
DROP LIGHT**

Lamp: 10W PAR LED(BOOM)

Available on:

10W→7W→5W→2W

Beam Angle: 80°

AC Input: 110VAC OR 230VAC

Dimension (mm): ϕ 160 x H230.

Cable: 1M



**iLook
10W LED Desk Lamp**

AC INPUT:

100~240VAC

OUTPUT:

DC15V-24V/1.6A

Light source:

a. LED 10W x 1

b. Color temperature: 3000K-5000K

c. CRI 80

Warranty:

2 years

Dimming control:

switch on / off

(100%-70%-30%-off)



DOWN LIGHT

Type	LED	Lumen	Beam Angle	Dimension (mm)
HRB-101	10Wx1	550~650lm	60°	L 195 x W 195 x H 190
HRB-201	10Wx2	550~650lm	60°	L 348 x W 195 x H 190
HRB-301	10Wx3	550~650lm	60°	L 500 x W 195 x H 190
HRB-401	10Wx4	550~650lm	60°	L 348 x W 348 x H 190



HTR-101/ HTR-102
10W Track Light

Lamp:LED 10W x1
Beam Angle:90°/120°
Body:Extrude Aluminum
Clear Anodized Finish
AC Input:110V OR 230VAC
Dimension (mm): ϕ 100 x L150



AB-101
10W Wall Light

Lamp:LED 10W x1
Body:Extrude Aluminum
Anodized Finish
AC Input:110V OR 230VAC
Dimension (mm):
 ϕ 125 x H135 x L230



HD-401
40W High Bay

Lamp:LED 10W x4
Body:3mm Extruded Aluminum
Reflector Clear Anodized Finish
Optional Powder Coated Finish
AC Input:110V OR 230VAC
Dimension (mm): ϕ 360 x H420



HC101
10W Ceiling Mounted Light

Lamp:LED 10W x1
Beam Angle:90°
Body:Aluminum Alloy
Clear Anodized Finish
AC Input:110V OR 230VAC
Dimension (mm): ϕ 90 x ϕ 80 x L174



MR1-S10
10W Solid Wall Light

Lamp:LED 5W x2
Beam Angle:140°
Body:Die-Casting
Aluminum Finish
AC Input:110V~230VAC
Dimension (mm):L 260 x W 245 x D110



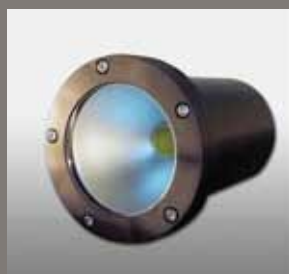
P650
10W LED garden light

Lamp:LED 10W x1
Body:Aluminum Alloy
Clear Anodized
Diffuser:AC
AC Input:110V OR 230VAC
Dimension (mm): ϕ 127 x ϕ 80 x L650



HG-101/HUW-101
10W Ground /Underwater Light

Lamp:LED 10Wx1
Beam Angle:90°/120°
Body:Extrude Aluminum
Processing Aluminum-
Hard Coat Anodized Finish
DC Input:15V~24VDC
Protection Class: IP 68
Dimension (mm): ϕ 103 x 151



HF-071/HG-071/HUW-071
7W Spot Light/Ground Light/Underwater Light

Lamp:LED 7Wx1
Body:Extrude Aluminum
Anodized Finish
DC Input:24VDC
Dimension (mm):
 ϕ 80 x ϕ 68 x L80

